



Precision Plumbing Products

"Specify with Confidence - Install with Pride"

LEAD FREE

PR-500 PRESSURE DROP ACTIVATED TRAP PRIMER SUBMITTAL

www.pppinc.net

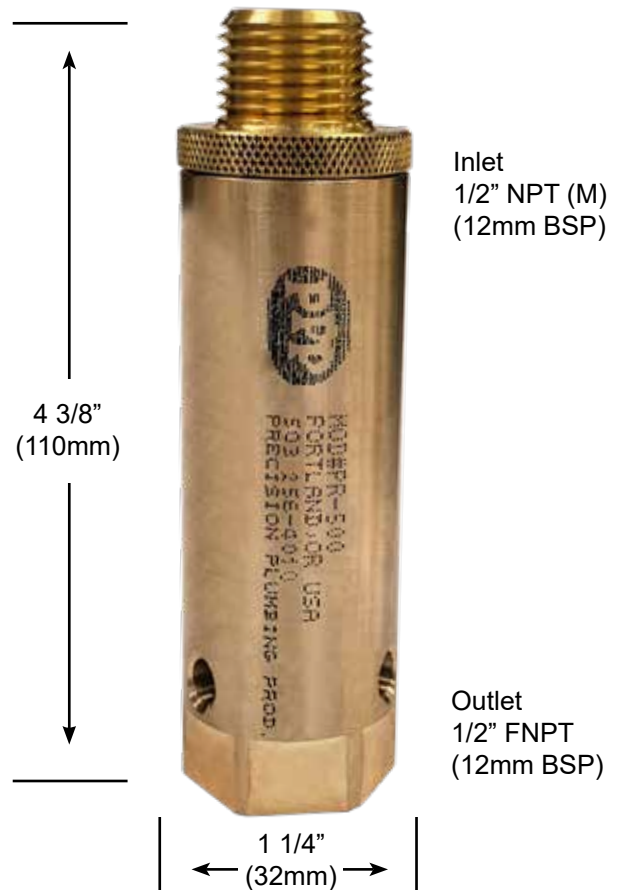
The PR-500 automatic pressure drop activated trap primer valve will prime up to 2 floor drains with our patented distribution DU-U or DU-4 units.

System operating range is 20 psi minimum to 80 psi (138 to 552 kpa) maximum.

The valve requires a 3 psi (21 kpa) pressure drop across the valve to activate and will deliver a metered amount of water to the floor drain. Trap primer is to be connected to a cold water supply only

Constructed of 693 brass, EPDM E70 O-rings, Dow #7 Silicone, #60 stainless steel mesh screen.

NO Adjustment Required!



PROJECT SUBMITTAL MODEL # \_\_\_\_\_

Project: \_\_\_\_\_

Contractor: \_\_\_\_\_

Engineer: \_\_\_\_\_

Date Submitted: \_\_\_\_\_

Prepared By: \_\_\_\_\_

PART NO's:

PR-500

**INSTALLATION REQUIREMENTS**

This valve is designed to be installed on 1/2" to 1 1/2" cold water line, feeding a flush valve or other open and closing valve supply line that is frequently used.

Trap Primer valve makeup line to floor drain is recommended to be a minimum of 12" off the finished floor before a 90° elbow can be installed.

The furthest recommended distance of makeup line is 20' to the floor drain.

Trap primer make up line must have continuous slope to the floor drain (consult local code requirements).

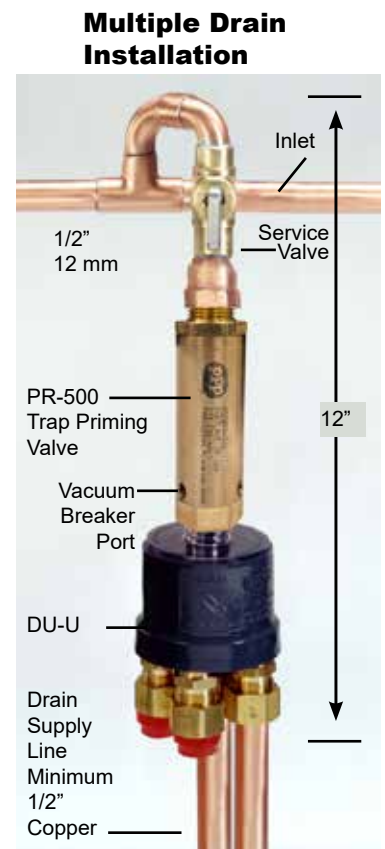
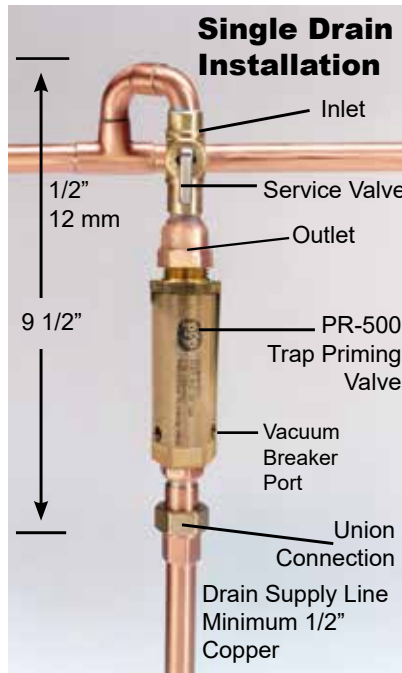
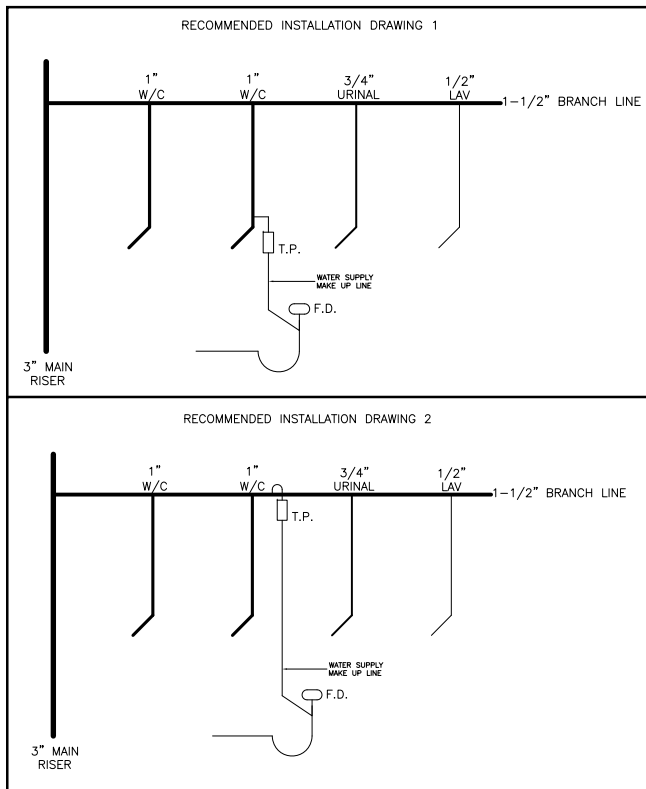
Install with a shut off valve for servicing on the inlet side and a union connection on the outlet side.

The valve must be installed level.

If using the distribution unit the clear plastic cover must be used.

Do not subject the valve to rough in pressure test.

FLOOR DRAIN TRAP PRIMER DIST. CHART		
# of Drains	Supply Tube	Dist. Units
1	N/A	N/A
2	N/A	DU-4/DU-U
Max. Water delivery based upon pressure drop and fixture unit activity on the system.		
Primer Model: PR-500 PRIME-RITE		



**Precision Plumbing Products**

Division of JL Industries, Inc.

802 SE 199th Avenue  
Portland, Oregon 97233

T (503) 256-4010  
F (503) 253-8165

www.pppinc.net

